

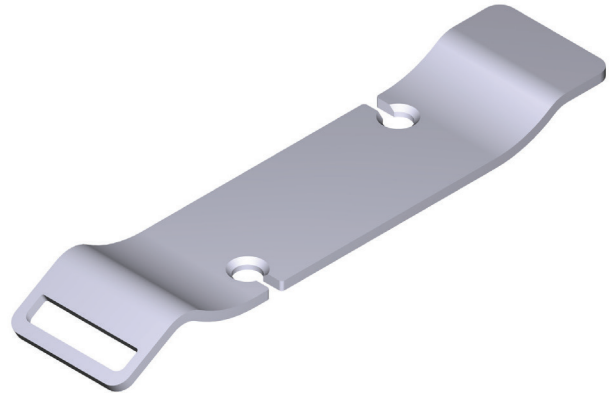
**DESCRIPTION**

- Recommended for the Amiata 1500, Barcelona 1500, Hampshire 1700, Mozzano, Mozzano 2, Toulouse 1500, Trivento, Vetralla 1500, Vetralla 1650 and Vetralla 1800

**WARRANTY**

- Refer to the website in the footer to locate the applicable warranty for different regions.

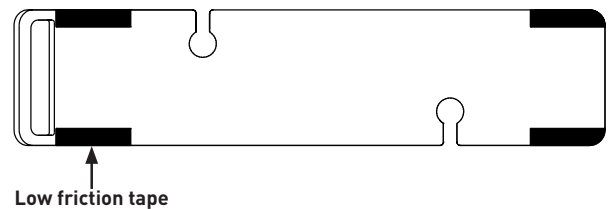
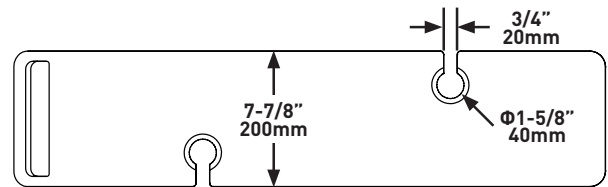
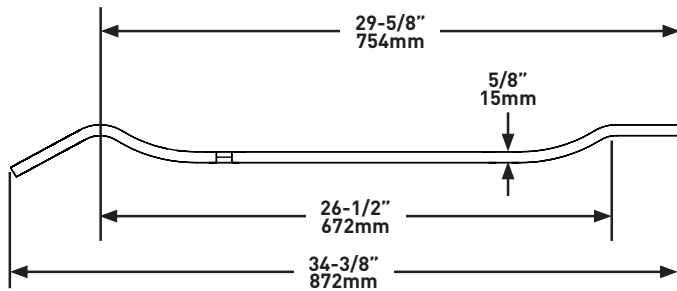
**SPECIFICATIONS**



**TOMBOLO 8**

Contemporary bath rack

**MODELS:** TOM-08-\*



For care and cleaning, product warranty, and additional information contact:

**US Customers**

U.S.A.  
 houseofrohl.com/support  
 1-800-777-9762

**Canadian Customers**

QUEBEC / MARITIMES / WESTERN CANADA  
 QUÉBEC / MARITIMES / OUEST CANADIEN  
 QUEBEC / MARITIMOS / CANADA OCCIDENTAL  
 houseofrohl.ca/support  
 1-866-473-8442

ONTARIO  
 houseofrohl.ca/support  
 1-800-287-5354

**EMEA Customers**

www.houseofrohl.design  
 +44 (0) 3338 000 011



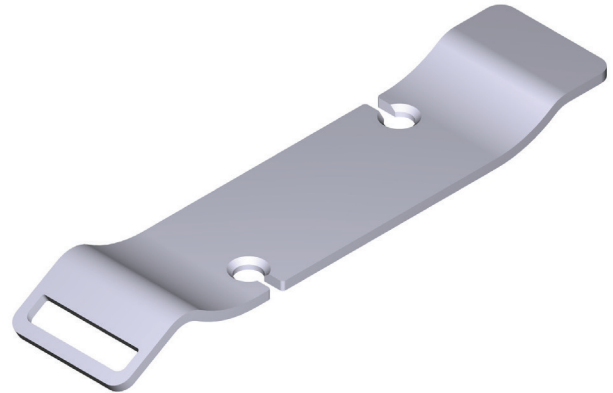
**BESCHREIBUNG**

- Passend zu den Wannen Amiata 1500, Barcelona 1500, Hampshire 1700, Mozzano, Mozzano 2, Toulouse 1500, Trivento, Vetralla 1500, Vetralla 1650 und Vetralla 1800

**GARANTIE**

- Die für die jeweiligen Regionen geltenden Garantiebedingungen finden Sie auf der im Fußbereich angegebenen Website.

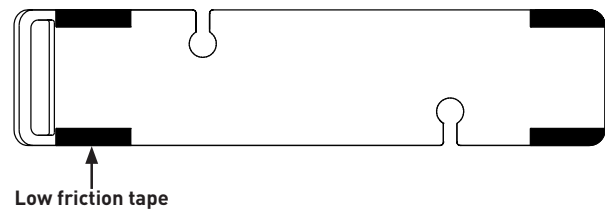
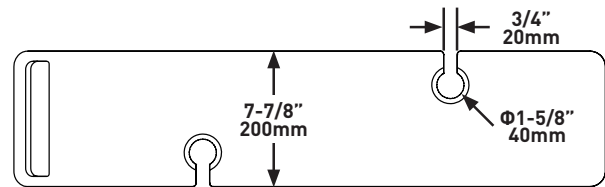
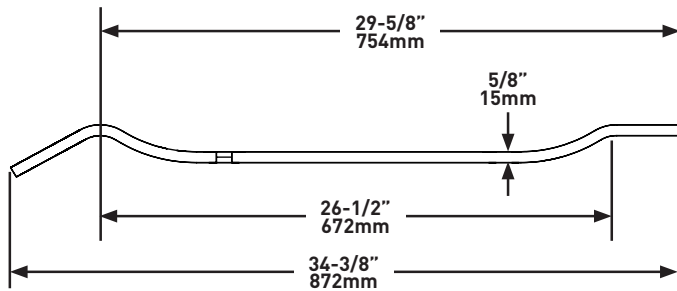
**TECHNISCHE DATEN**



**TOMBOLO 8**

Moderne Badewannenbrücke

**MODELLE:** TOM-08-\*



Für Informationen zur Pflege und Reinigung, Produktgarantie und weitere Informationen wenden Sie sich bitte an:

**Kunden in den USA**

U.S.A.  
[houseofrohl.com/support](http://houseofrohl.com/support)  
 1-800-777-9762

**Kunden in Kanada**

QUEBEC / MARITIMES / WESTERN CANADA  
 QUÉBEC / MARITIMES / OUEST CANADIEN  
 QUEBEC / MARITIMOS / CANADA OCCIDENTAL  
[houseofrohl.ca/support](http://houseofrohl.ca/support)  
 1-866-473-8442

ONTARIO  
[houseofrohl.ca/support](http://houseofrohl.ca/support)  
 1-800-287-5354

**Kunden in der EMEA-Region**

[www.houseofrohl.design](http://www.houseofrohl.design)  
 +44 (0) 3338 000 011

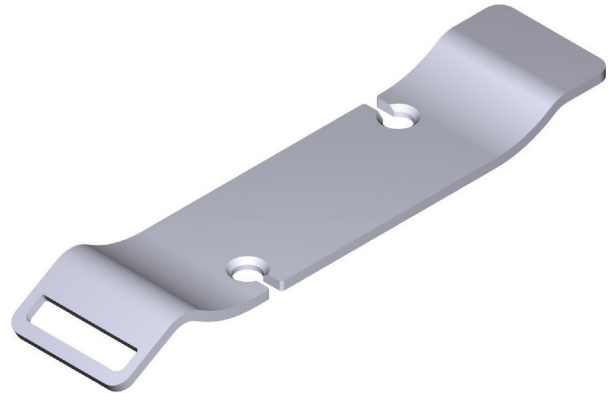
**DESCRIPCIÓN**

- Recomendada para Amiata 1500, Barcelona 1500, Hampshire 1700, Mozzano, Mozzano 2, Toulouse 1500, Trivento, Vetralla 1500, Vetralla 1650 y Vetralla 1800

**GARANTÍA**

- Consulte la página web que aparece en el pie de página para encontrar la garantía correspondiente a cada región.

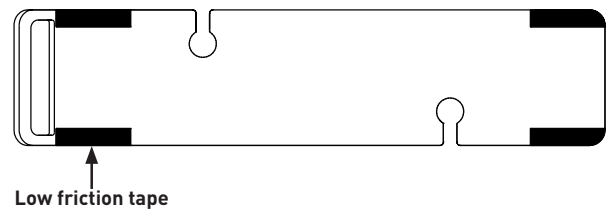
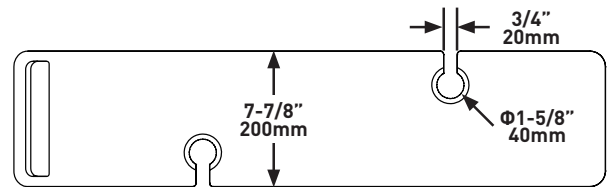
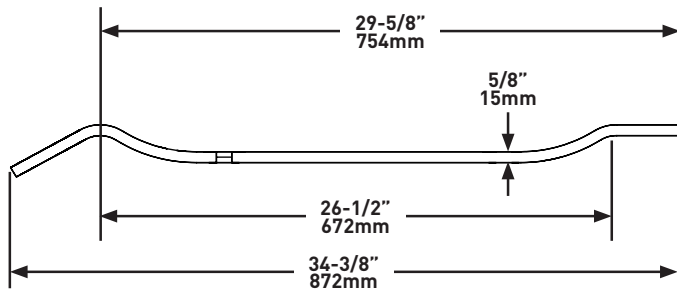
**ESPECIFICACIONES**



**TOMBOLO 8**

Bandeja de bañera

**MODELOS:** TOM-08-\*



Para temas relacionados con el cuidado, la limpieza y la garantía del producto e información adicional, póngase en contacto con:

**Cientes de EE. UU.**

U.S.A.  
 houseofrohl.com/support  
 1-800-777-9762

**Cientes de Canadá**

QUEBEC / MARITIMES / WESTERN CANADA  
 QUÉBEC / MARITIMES / OUEST CANADIEN  
 QUEBEC / MARITIMOS / CANADA OCCIDENTAL  
 houseofrohl.ca/support  
 1-866-473-8442

**Cientes de EMEAA**

www.houseofrohl.design  
 +44 (0) 3338 000 011

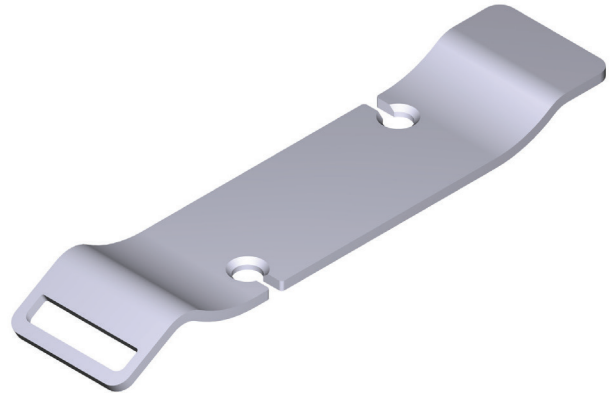
**DESCRIPTION**

- Recommandé pour les baignoires Amiata 1500, Barcelona 1500, Hampshire 1700, Mozzano, Mozzano 2, Toulouse 1500, Trivento, Vetralla 1500, Vetralla 1650 et Vetralla 1800

**GARANTIE**

- Reportez-vous au site Web indiqué en pied de page pour consulter la garantie applicable selon les régions.

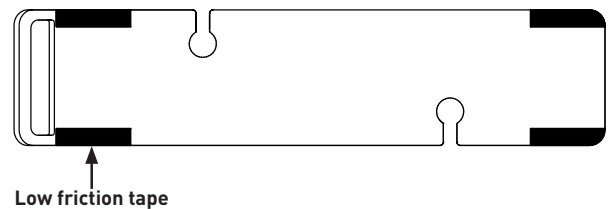
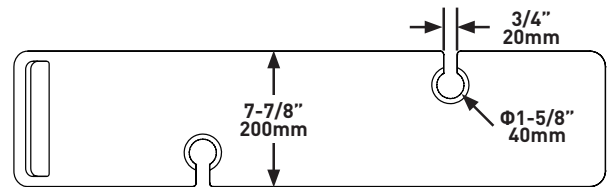
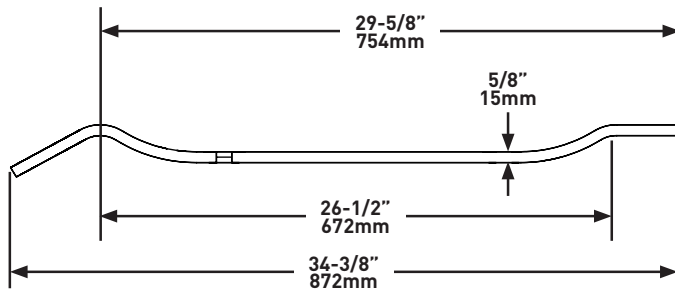
# SPÉCIFICATIONS



## TOMBOLO 8

Pont de baignoire Design

**MODÈLES:** TOM-08-\*



Pour l'entretien et le nettoyage, la garantie du produit et d'autres informations, contacter :

**Clients américains**

U.S.A.  
[houseofrohl.com/support](http://houseofrohl.com/support)  
 1-800-777-9762

QUEBEC / MARITIMES / WESTERN CANADA  
 QUÉBEC / MARITIMES / OUEST CANADIEN  
 QUEBEC / MARITIMOS / CANADA OCCIDENTAL  
[houseofrohl.ca/support](http://houseofrohl.ca/support)  
 1-866-473-8442

**Clients canadiens**

ONTARIO  
[houseofrohl.ca/support](http://houseofrohl.ca/support)  
 1-800-287-5354

**Clients zone EMEAA**

[www.houseofrohl.design](http://www.houseofrohl.design)  
 +44 (0) 3338 000 011



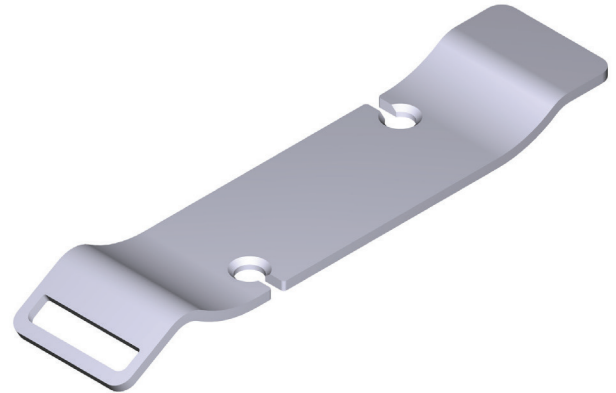
**DESCRIZIONE**

- Raccomandato per le vasche Amiata 1500, Barcelona 1500, Hampshire 1700, Mozzano, Mozzano 2, Toulouse 1500, Trivento, Vetralla 1500, Vetralla 1650 e Vetralla 1800

**GARANZIA**

- Consultare il sito web indicato a piè di pagina per individuare la garanzia applicabile alle diverse regioni.

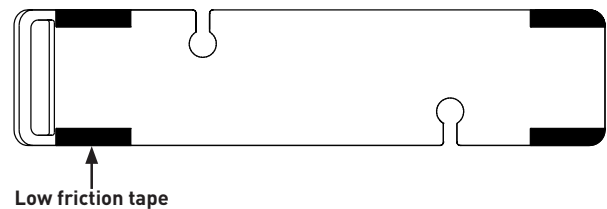
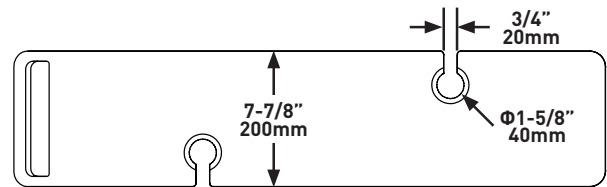
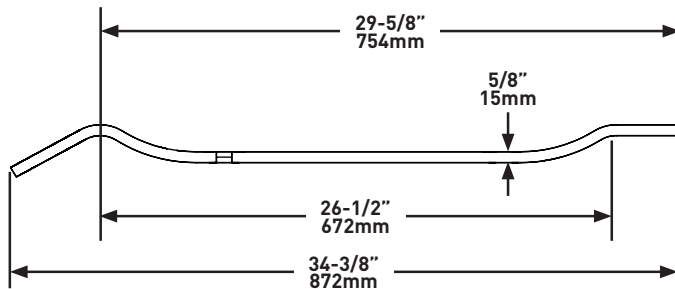
**SPECIFICHE TECNICHE**



**TOMBOLO 8**

Porta libro/vino contemporaneo per vasca

**MODELLI:** TOM-08-\*



Per la cura e la manutenzione, la garanzia dei prodotti e altre informazioni contattare:

**Clienti U.S.A.**

U.S.A.  
[houseofrohl.com/support](http://houseofrohl.com/support)  
 1-800-777-9762

QUEBEC / MARITIMES / WESTERN CANADA  
 QUÉBEC / MARITIMES / OUEST CANADIEN  
 QUEBEC / MARITIMOS / CANADA OCCIDENTAL  
[houseofrohl.ca/support](http://houseofrohl.ca/support)  
 1-866-473-8442

**Clienti del Canada**

ONTARIO  
[houseofrohl.ca/support](http://houseofrohl.ca/support)  
 1-800-287-5354

**Clienti EMEA**

[www.houseofrohl.design](http://www.houseofrohl.design)  
 +44 (0) 3338 000 011



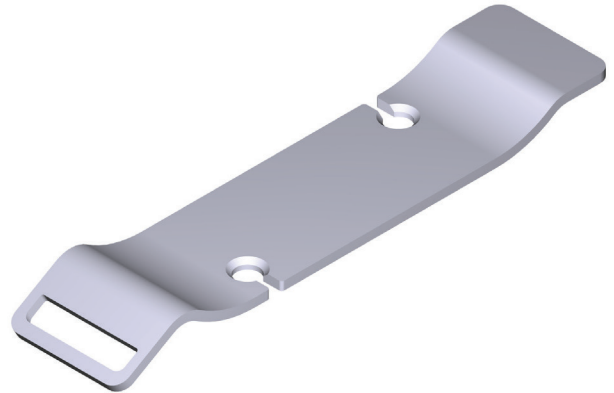
**BESCHRIJVING**

- Aanbevolen voor modellen Amiata 1500, Barcelona 1500, Hampshire 1700, Mozzano, Mozzano 2, Toulouse 1500, Trivento, Vetralla 1500, Vetralla 1650 en Vetralla 1800

**GARANTIE**

- Raadpleeg de website in de voettekst voor de toepasselijke garantie voor verschillende regio's.

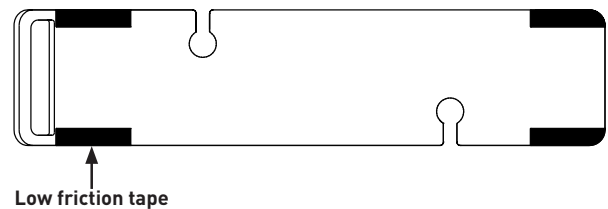
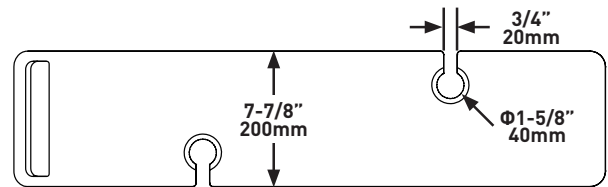
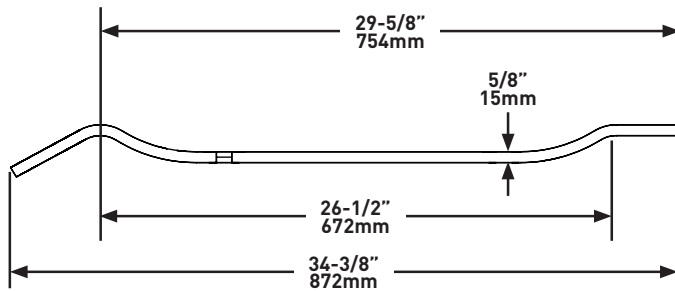
**SPECIFICATIES**



**TOMBOLO 8**

Modern Badrek

MODELLEN: TOM-08-\*



Neem voor onderhoud en reiniging, productgarantie en aanvullende informatie contact op met:

**Amerikaanse klanten**

U.S.A.  
 houseofrohl.com/support  
 1-800-777-9762

**Canadese klanten**

QUEBEC / MARITIMES / WESTERN CANADA  
 QUÉBEC / MARITIMES / OUEST CANADIEN  
 QUEBEC / MARITIMOS / CANADA OCCIDENTAL  
 houseofrohl.ca/support  
 1-866-473-8442

ONTARIO  
 houseofrohl.ca/support  
 1-800-287-5354

**EMEA klanten**

www.houseofrohl.design  
 +44 (0) 3338 000 011

