

SPECIFICATIONS

SHAPE

- Oval

SIZE

- Length: 1778 mm, Width: 755 mm, Height: 559 mm

MATERIAL

- QUARRYCAST™

DRAIN HOLE

- Centred

WEIGHT

- 78 kg

CAPACITY

- 322 L

INSTALLATION TYPE

- Freestanding

FINISH

- Gloss White, Matt White

DRAIN SET

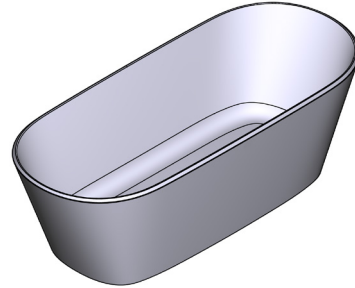
- Drain kit required, sold separately
- Recommended wastes: K-12, K-17, K-36, K-40

STANDARDS

- CSA B45.5 / IAPMO Z124

WARRANTY

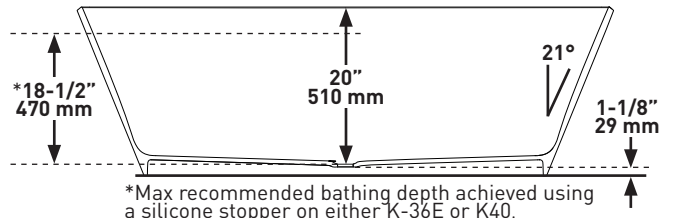
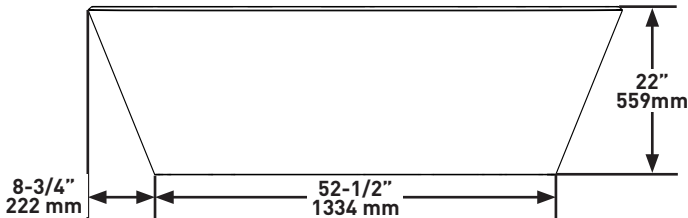
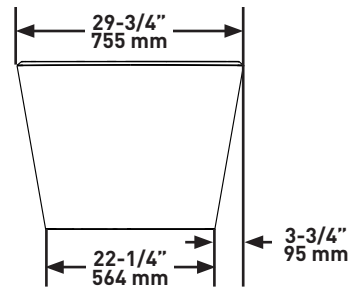
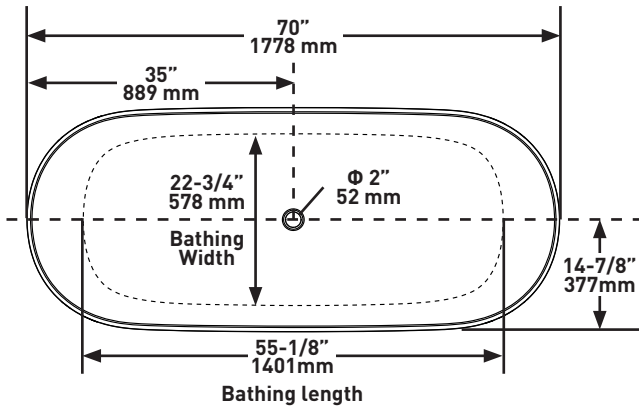
- 25 years residential
- 8 years commercial
- Visit vandabaths.com for more information



VETRALLA™1800

Freestanding Bath

MODELS: VE3-N-SW-NO, VE3M-N-SM-NO



For care and cleaning, product warranty, and additional information contact:

US Customers

U.S.A.
 houseofrohl.com/support
 1-800-777-9762

QUEBEC / MARITIMES / WESTERN CANADA
 QUÉBEC / MARITIMES / OUEST CANADIEN
 QUEBEC / MARITIMOS / CANADA OCCIDENTAL
 houseofrohl.ca/support
 1-866-473-8442

Canadian Customers

ONTARIO
 houseofrohl.ca/support
 1-800-287-5354

EMEA Customers

www.houseofrohl.design
 +44 (0) 3338 000 011

FORM

- Oval

GRÖSSE

- Länge: 1778 mm, Breite: 755 mm, Höhe: 559 mm

MATERIAL

- QUARRYCAST™

ABFLUSSLOCH

- Zentriert

GEWICHT

- 78 kg

KAPAZITÄT

- 322 L

INSTALLATIONSART

- Freistehend

OBERFLÄCHE

- Wannenoberfläche in Mattweiß (SM) oder Glanzweiß (SW)

ABFLUSSSET

- Abflussgarnitur erforderlich, separat erhältlich
- Empfohlene Ablaufventile: K-12, K-17, K-36, K-40

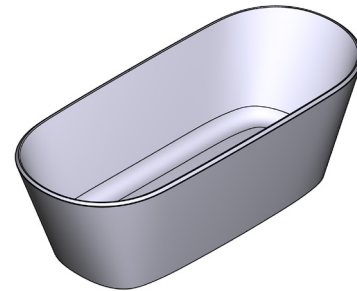
ZERTIFIZIERUNGEN

- CSA B45.5 / IAPMO Z124

GARANTIE

- 25 Jahre private Nutzung
- 8 Jahre gewerbliche Nutzung
- Weitere Informationen unter vandabaths.com

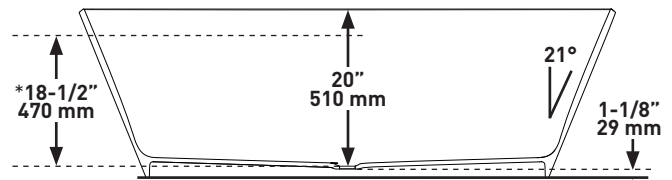
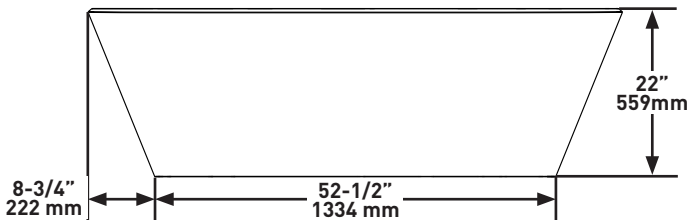
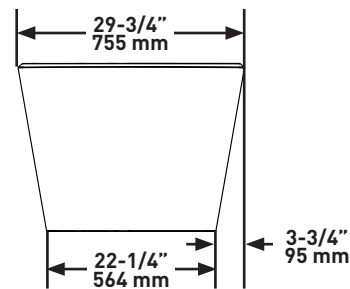
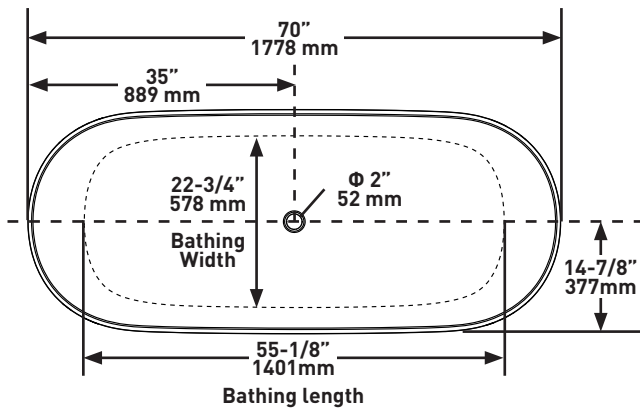
TECHNISCHE DATEN



VETRALLA™1800

Freistehende Badewanne

MODELLE: VE3-N-SW-N0, VE3M-N-SM-N0



*Die empfohlene maximale Badetiefe wird mit einem Silikonstopfen auf K-36E oder K40 erreicht.

Für Informationen zur Pflege und Reinigung, Produktgarantie und weitere Informationen wenden Sie sich bitte an:

Kunden in den USA

U.S.A.
 houseofrohl.com/support
 1-800-777-9762

QUEBEC / MARITIMES / WESTERN CANADA
 QUÉBEC / MARITIMES / OUEST CANADIEN
 QUEBEC / MARITIMOS / CANADA OCCIDENTAL
 houseofrohl.ca/support
 1-866-473-8442

Kunden in Kanada

ONTARIO
 houseofrohl.ca/support
 1-800-287-5354

Kunden in der EMEA-Region

www.houseofrohl.design
 +44 (0) 3338 000 011

FORMA

- Ovalado

TAMAÑO

- Largo: 1778 mm, Ancho: 755 mm, Altura: 559 mm

MATERIAL

- QUARRYCAST™

AGUJERO DEL DESAGÜE

- Centrado

PESO

- 78 kg

CAPACIDAD

- 322 L

TIPO DE INSTALACIÓN

- Independiente

ACABADO

- Blanco mate (SM) o blanco brillante (SW)

JUEGO DE DESAGÜE

- Requiere kit de desagüe que se vende por separado
- Desagües recomendados: K-12, K-17, K-36, K-40

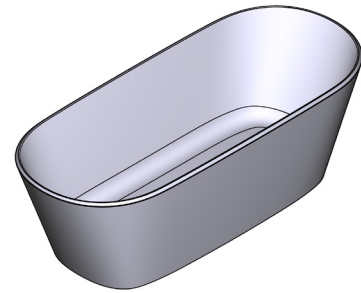
ESTÁNDARES

- CSA B45.5 / IAPMO Z124

GARANTÍA

- 25 años para un uso residencial
- 8 años para un uso comercial
- Para más información, visite vandabaths.com

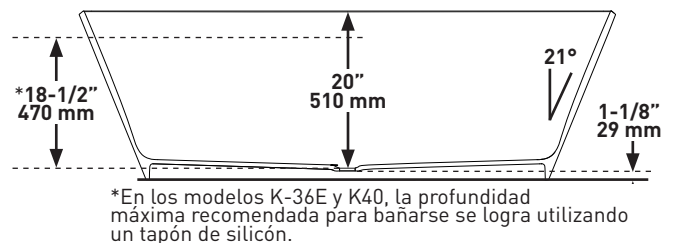
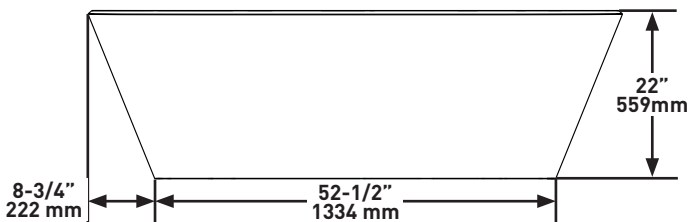
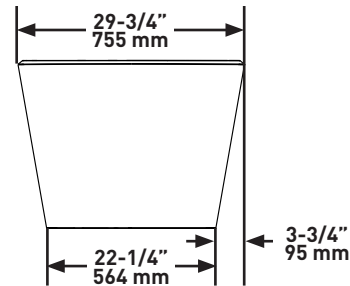
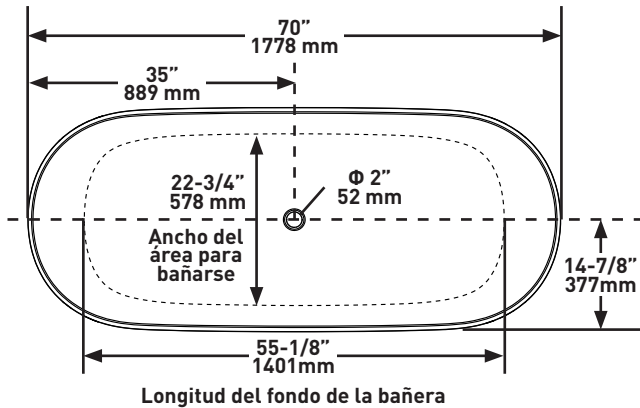
ESPECIFICACIONES



VETRALLA™1800

Bañera exenta

MODELOS: VE3-N-SW-NO, VE3M-N-SM-NO



Para temas relacionados con el cuidado, la limpieza y la garantía del producto e información adicional, póngase en contacto con:

Cientes de EE. UU.

U.S.A.
 houseofrohl.com/support
 1-800-777-9762

QUEBEC / MARITIMES / WESTERN CANADA
 QUÉBEC / MARITIMES / OUEST CANADIEN
 QUEBEC / MARITIMOS / CANADA OCCIDENTAL
 houseofrohl.ca/support
 1-866-473-8442

Cientes de Canadá

ONTARIO
 houseofrohl.ca/support
 1-800-287-5354

Cientes de EMEA

www.houseofrohl.design
 +44 (0) 3338 000 011

SPÉCIFICATIONS

FORME

- Ovale

DIMENSIONS

- Longueur: 1778 mm, Largeur : 755 mm, Hauteur : 559 mm

MATÉRIAU

- QUARRYCAST™

ORIFICE D'ÉVACUATION

- Centrée

POIDS

- 78 kg

CAPACITÉ

- 322 L

TYPE D'INSTALLATION

- En îlot

FINITION

- Blanc mat (SM) ou blanc laqué (SW)

ASSEMBLAGE DE DRAIN

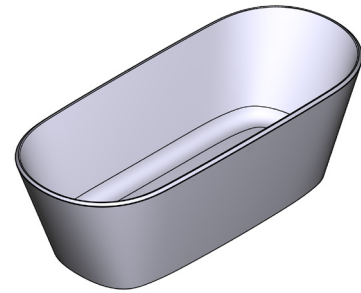
- Kit d'évacuation requis, vendu séparément
- Vidages recommandés: K-12, K-17, K-36, K-40

CERTIFICATIONS

- CSA B45.5 / IAPMO Z124

GARANTIE

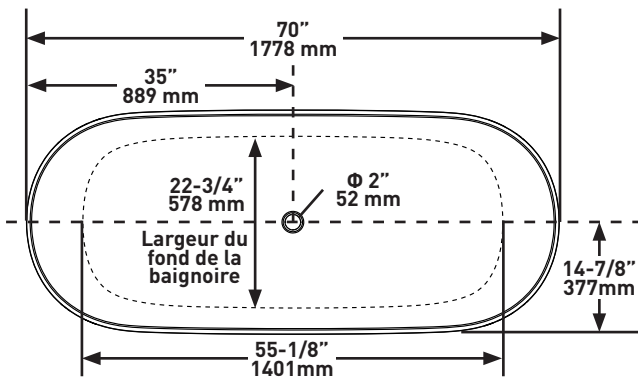
- 25 années en utilisation domestique
- 8 années en utilisation professionnelle
- Pour davantage d'informations, rendez-vous sur vandabaths.com



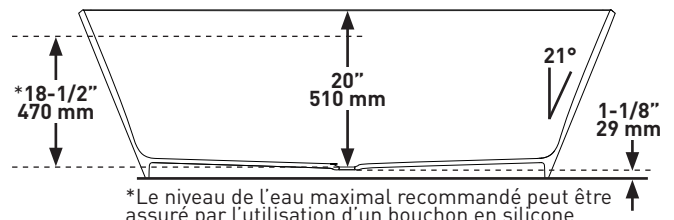
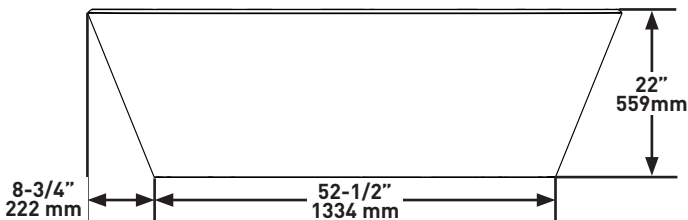
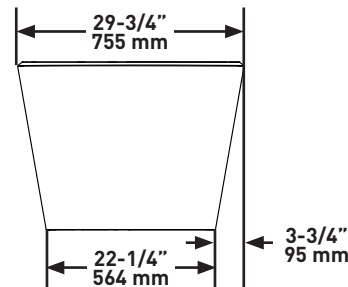
VETRALLA™1800

Baignoire îlot

MODÈLES : VE3-N-SW-NO, VE3M-N-SM-NO



Longueur du fond de la baignoire



*Le niveau de l'eau maximal recommandé peut être assuré par l'utilisation d'un bouchon en silicone avec les bondes K-36E ou K40.

Pour l'entretien et le nettoyage, la garantie du produit et d'autres informations, contacter :

Clients américains

U.S.A.
 houseofrohl.com/support
 1-800-777-9762

QUEBEC / MARITIMES / WESTERN CANADA
 QUÉBEC / MARITIMES / OUEST CANADIEN
 QUEBEC / MARITIMOS / CANADA OCCIDENTAL
 houseofrohl.ca/support
 1-866-473-8442

Clients canadiens

ONTARIO
 houseofrohl.ca/support
 1-800-287-5354

Clients zone EMEA

www.houseofrohl.design
 +44 (0) 3338 000 011

FORMA

- Ovale

DIMENSIONI

- Lunghezza: 1778 mm, Larghezza: 755 mm, Altezza: 559 mm

MATERIALE

- QUARRYCAST™

FORO DI SCARICO

- Centrato

PESO

- 78 kg

CAPACITÀ

- 322 L

TIPO DI INSTALLAZIONE

- Freestanding

FINITURA

- Bianco opaco (SM) o bianco lucido (SW)

SET DI SCARICO

- Kit per scarico necessario, venduto separatamente
- Scarichi raccomandati: K-12, K-17, K-36, K-40

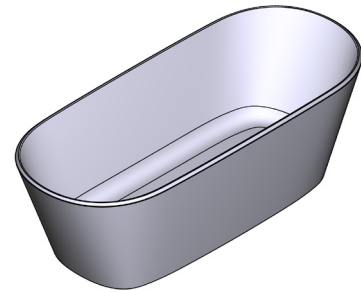
STANDARD

- CSA B45.5 / IAPMO Z124

GARANZIA

- 25 anni residenziale
- 8 anni commerciale
- Per maggiori informazioni visita vandabaths.com

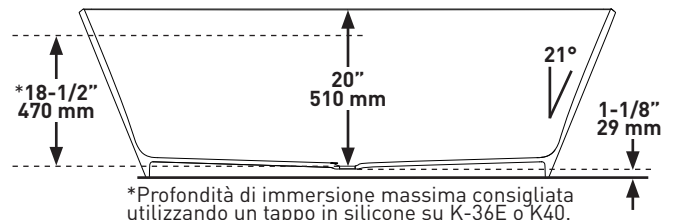
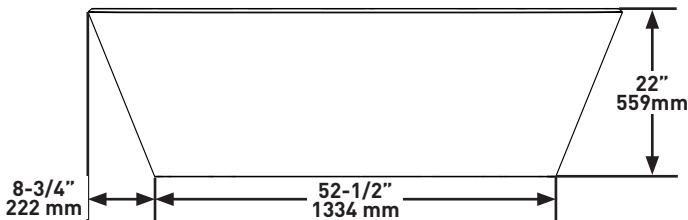
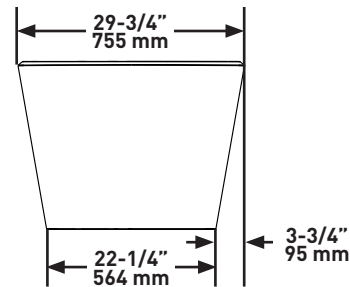
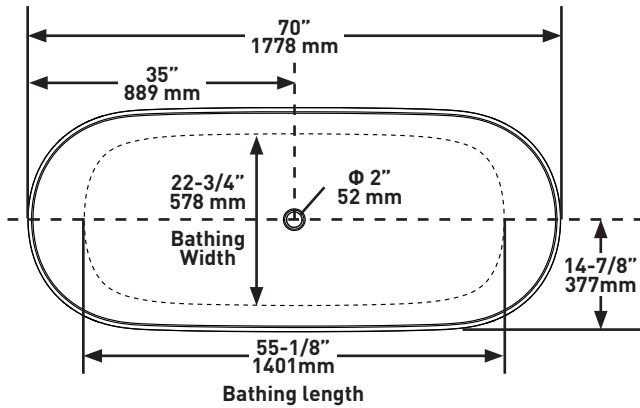
SPECIFICHE TECNICHE



VETRALLA™1800

Vasca da bagno a libera installazione

MODELLI: VE3-N-SW-NO, VE3M-N-SM-NO



Per la cura e la manutenzione, la garanzia dei prodotti e altre informazioni contattare:

Clienti U.S.A.

U.S.A.
 houseofrohl.com/support
 1-800-777-9762

QUEBEC / MARITIMES / WESTERN CANADA
 QUÉBEC / MARITIMES / OUEST CANADIEN
 QUEBEC / MARITIMOS / CANADA OCCIDENTAL
 houseofrohl.ca/support
 1-866-473-8442

Clienti del Canada

ONTARIO
 houseofrohl.ca/support
 1-800-287-5354

Clienti EMEA

www.houseofrohl.design
 +44 (0) 3338 000 011

VORM

- Ovaal

FORMAAT

- Lengte: 1778 mm, Breedte: 755 mm, Hoogte: 559 mm

MATERIAAL

- QUARRYCAST™

AFVOEROPENING

- Gecentreerd

GEWICHT

- 78 kg

CAPACITEIT

- 322 L

SOORT INSTALLATIE

- Vrijstaand

AFWERKING

- Mat wit (SM) of glanzend wit (SW)

AFVOERSET

- Afvoerzet vereist, apart verkrijgbaar
- Aanbevolen afvoer: K-12, K-17, K-36, K-40

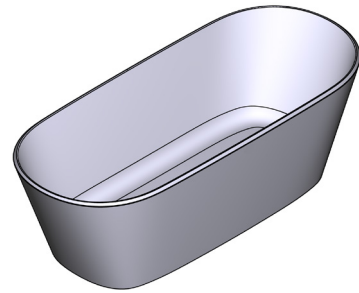
CERTIFICERING

- CSA B45.5 / IAPMO Z124

GARANTIE

- 25 jaar residentieel
- 8 jaar commercieel
- Voor meer informatie, bezoek vandabaths.com

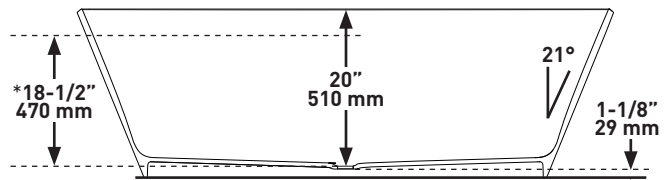
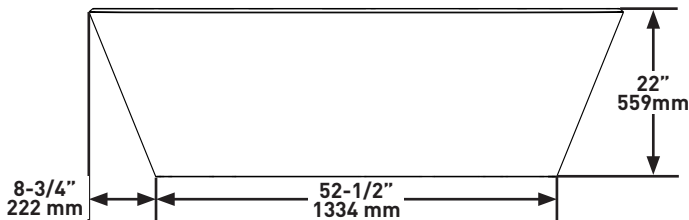
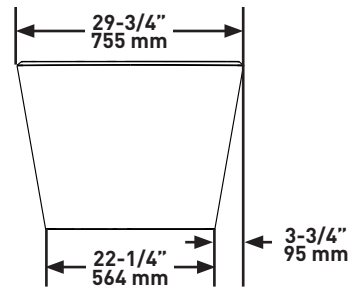
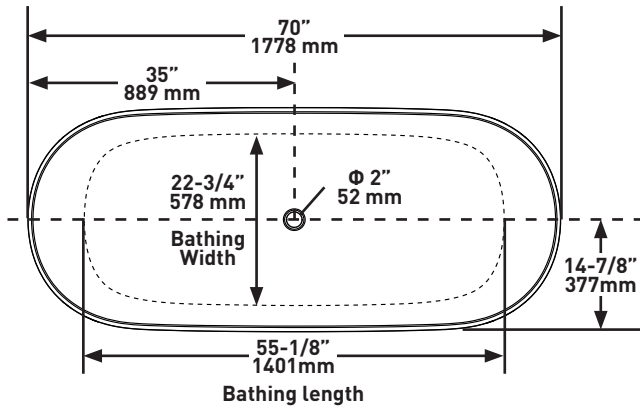
SPECIFICATIES



VETRALLA™1800

Vrijstaand bad

MODELLEN: VE3-N-SW-NO, VE3M-N-SM-NO



*Maximale aanbevolen baddiepte bereikt met een siliconen stop op K-36E of K40.

Neem voor onderhoud en reiniging, productgarantie en aanvullende informatie contact op met:

Amerikaanse klanten

U.S.A.
 houseofrohl.com/support
 1-800-777-9762

QUEBEC / MARITIMES / WESTERN CANADA
 QUÉBEC / MARITIMES / OUEST CANADIEN
 QUEBEC / MARITIMOS / CANADA OCCIDENTAL
 houseofrohl.ca/support
 1-866-473-8442

Canadese klanten

ONTARIO
 houseofrohl.ca/support
 1-800-287-5354

EMEA klanten

www.houseofrohl.design
 +44 (0) 3338 000 011