

**SHAPE**

- Oval

**SIZE**

- Length: 1778 mm, Width: 755 mm, Height: 559 mm

**MATERIAL**

- QUARRYCAST™

**DRAIN HOLE**

- Centred

**WEIGHT**

- 78kg

**CAPACITY**

- 322L

**INSTALLATION TYPE**

- Freestanding

**FINISH**

- Gloss White, Matt White

**DRAIN SET**

- Drain kit required, sold separately
- Recommended wastes: K-12

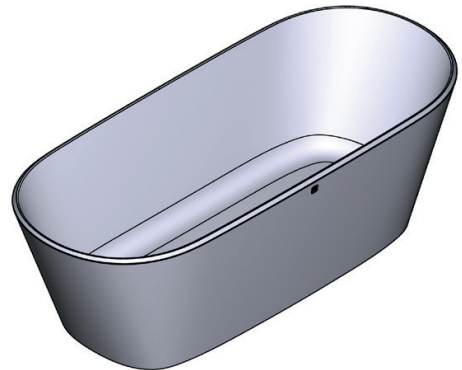
**STANDARDS**

- CSA B45.5 / IAPMO Z124

**WARRANTY**

- 25 years residential
- 8 years commercial
- Visit [www.vandabaths.com](http://www.vandabaths.com) for further information

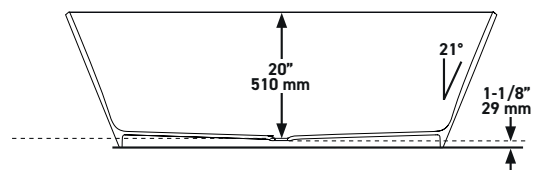
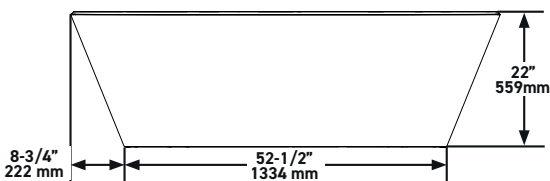
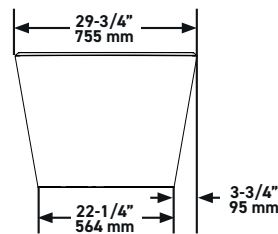
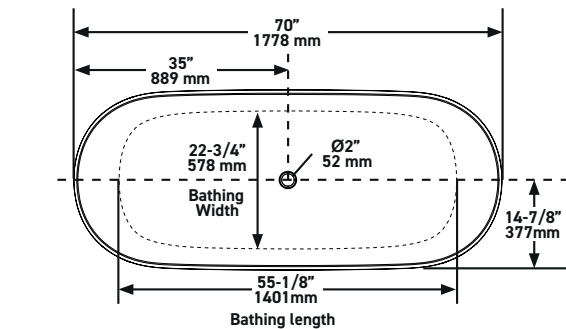
# SPECIFICATIONS



## VETRALLA™ 1800

Freestanding Bath

MODELS: VE3-N-SW-NO, VE3M-N-SM-NO



For care and cleaning, product warranty, and additional information contact:

**US Customers**

U.S.A.  
[houseofrohl.com/support](http://houseofrohl.com/support)  
 1-800-777-9762

**Canadian Customers**

Quebec / Maritimes / Western Canada  
 Québec / Maritimes / Ouest Canadien  
 Quebec / Maritimos / Canada Occidental  
[houseofrohl.ca/support](http://houseofrohl.ca/support)  
 1-866-473-8442

**EMEAA Customers**

[www.houseofrohl.design](http://www.houseofrohl.design)  
 +44 (0) 3338 000 011