

SHAPE

- Oval

SIZE

- Length: 1778 mm, Width: 755 mm, Height: 559 mm

MATERIAL

- QUARRYCAST™

DRAIN HOLE

- Centred

WEIGHT

- 78kg

CAPACITY

- 451L

INSTALLATION TYPE

- Freestanding

Note: All baths in Australia come standard without an overflow

FINISH

- Gloss White, Matt White

DRAIN SET

- Drain kit required, sold separately
- Recommended wastes: K-12, K-17

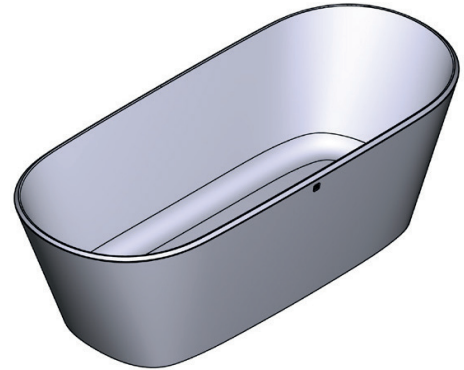
STANDARDS

- CSA B45.5:22 / IAPMO Z124-2022

WARRANTY

- 25 years residential
- 8 years commercial
- Visit www.vandabaths.com for further information

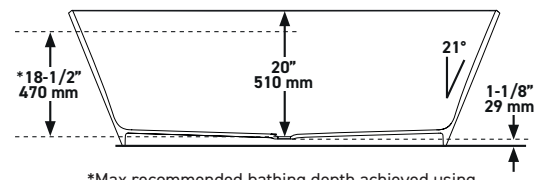
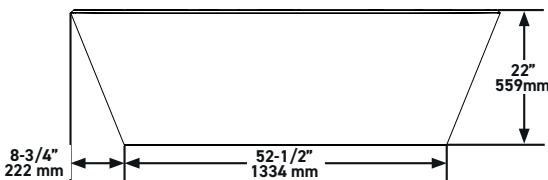
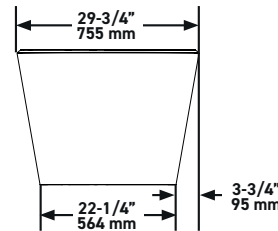
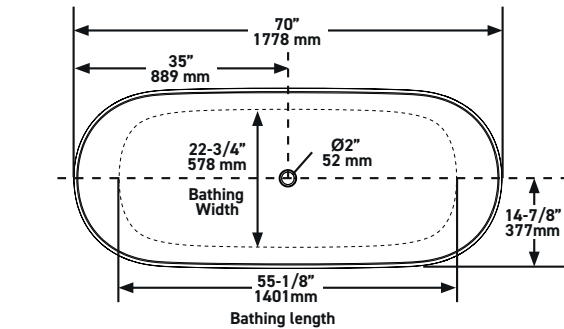
SPECIFICATIONS



VETRALLA™ 1800

Freestanding Bath

MODELS: VE3-N-SW-NO, VE3M-N-SM-NO



*Max recommended bathing depth achieved using a silicone stopper on either K12 or K17.

For care and cleaning, product warranty, and additional information contact:

US Customers

U.S.A.
houseofrohl.com/support
 1-800-777-9762

Canadian Customers

Quebec / Maritimes / Western Canada
 Québec / Maritimes / Ouest Canadien
 Quebec / Maritimos / Canada Occidental
houseofrohl.ca/support
 1-866-473-8442

EMEAA Customers

www.houseofrohl.design
 +44 (0) 3338 000 011