

victoria ⊕ albert®

Special edition swatchbook

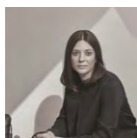


In collaboration with

Wallpaper*

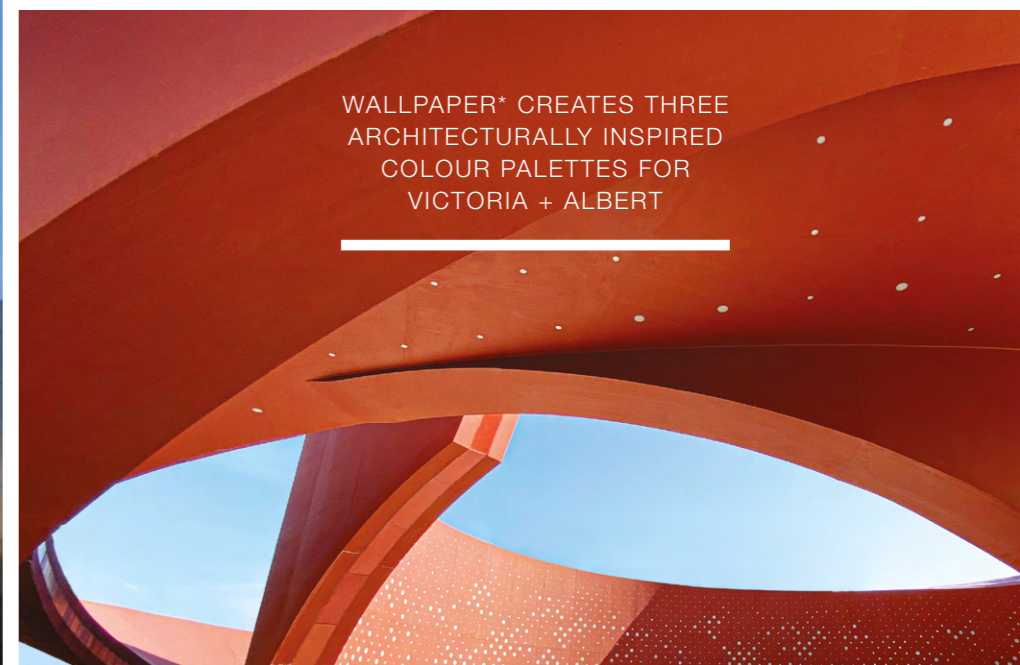
MODERN MOVEMENTS IN COLOUR: ARCHITECTURALLY INSPIRED PALETTES

Architecture styles of the 20th century inspired the new collection of colour palettes by Wallpaper* and Victoria + Albert. Editor-in-chief Sarah Douglas looked to the tonal ranges employed by Belgian minimalists, the splashes of primaries in Brazilian modernism and the colour-popped chromatics in American postmodernism, adapting and reimagining shade and hue for the contemporary bathroom environment. Your journey into modern 'bathitecture' begins here.



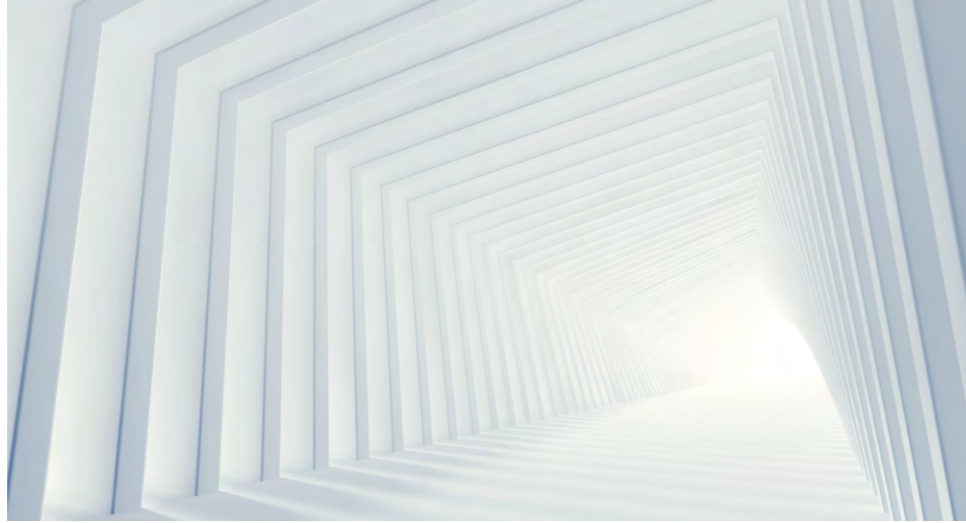
"BATHROOMS ARE SANCTUARIES; EXTREMELY PERSONAL SPACES WHERE YOU NEED TO FEEL CALM AND SERENE. THESE COLOUR PALETTES WERE INFLUENCED AND INSPIRED BY ARCHITECTURE AND THE SCULPTURAL FORMS OF THE VICTORIA + ALBERT DESIGNS."

Sarah Douglas – Wallpaper* editor-in-chief



WALLPAPER* CREATES THREE
ARCHITECTURALLY INSPIRED
COLOUR PALETTES FOR
VICTORIA + ALBERT

THIS SUBTLY NUANCED
PALETTE CREATES A
GENTLE AMBIENCE
ACROSS A BATHROOM



ios 54 – RAL 250 70 15 / 000 80 00

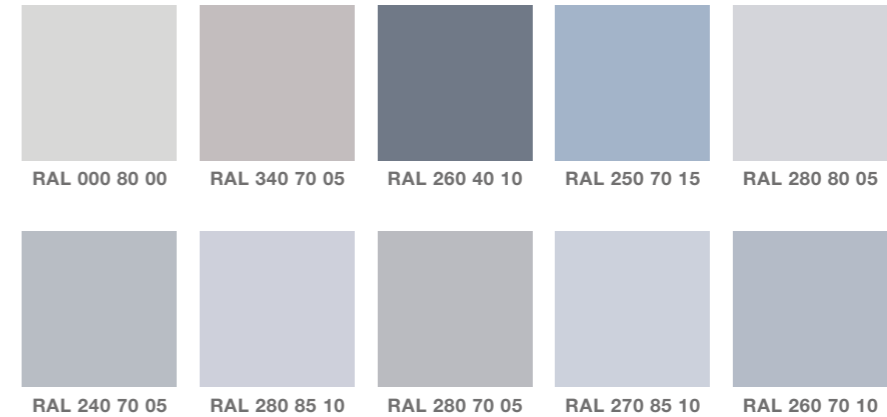


ios – RAL 270 85 10

ios 54 – RAL 340 70 05

Belgian Minimalism

Referencing the Belgian minimalist movement in design and architecture, this subtle colour palette is inspired by the works of architects Leon Stynen and Juliaan Lampens. Incorporating cool, calm, soft colours – light blues, linen-like pastels, stone and slate greys – the tonal range of the Belgian Minimalism palette references raw and untreated materials and has a minimising, focusing effect. By removing attention from objective form and turning attention to the essence of the surrounding environment, this subtly nuanced palette creates a gentle ambience across a bathroom.





Napoli 57 – RAL 020 30 40 / 170 30 20 /
040 20 19 / 250 20 25



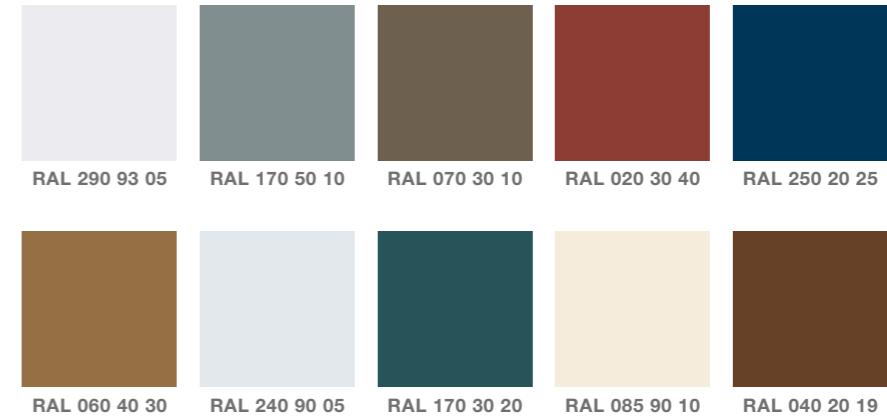
A THRILLING, PIONEERING MOVEMENT
IN CONTEMPORARY SOUTH AMERICAN
ARCHITECTURE AND DESIGN INFORMS
THE BRAZILIAN MODERNISM PALETTE

Napoli – RAL 060 40 30 / 170 30 20

Brazilian Modernism

Referencing the work of mavericks Lina Bo Bardi, Paulo Mendes da Rocha and Oscar Niemeyer, the Brazilian Modernism spectrum comprises rich, deep colours – greens, earth tones, glass-brick blues – as well as concrete and translucency.

Bo Bardi's combination of brightness and brutalism was an inspiration – particularly the Italy-born innovator's use of red accents and architectural detail breaking out of large areas of industrial grey concrete that introduces contemporary, graphic playfulness to the smooth rendered mass.





Amalfi 55 –
RAL 095 90 59 /
100 90 10 /
000 20 00

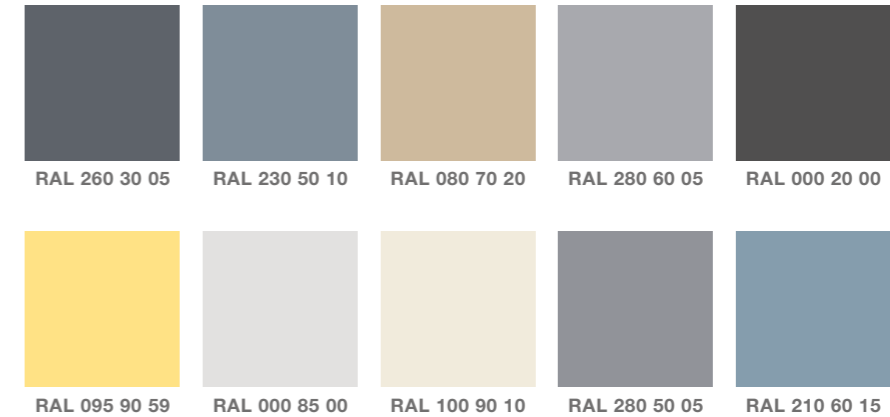


A PALETTE THAT IS CONFIDENT,
INDUSTRIAL, DRAMATIC, AND
FEARLESSLY CONTRASTING

Amalfi – RAL 080 70 20
Amalfi 55 – RAL 210 60 15

American Postmodernism

The work of Frank Gehry, Philip Johnson, Michael Graves, Robert Venturi and Denise Scott Brown – the pluralism, irony, paradox and contextualism of American postmodernism – all contribute to a palette that is confident, industrial, dramatic, and fearlessly contrasting. Think monochromatics with pops of colour – steel, graphite, grey, black, with soft gold, green glass. America's postmodernist buildings embrace colour like no other architectural movement, giving façades variety and personality through the deployment of coloured glass, ceramic tiles, or stone – an aesthetic sensibility that can be adapted and applied to the bathroom.



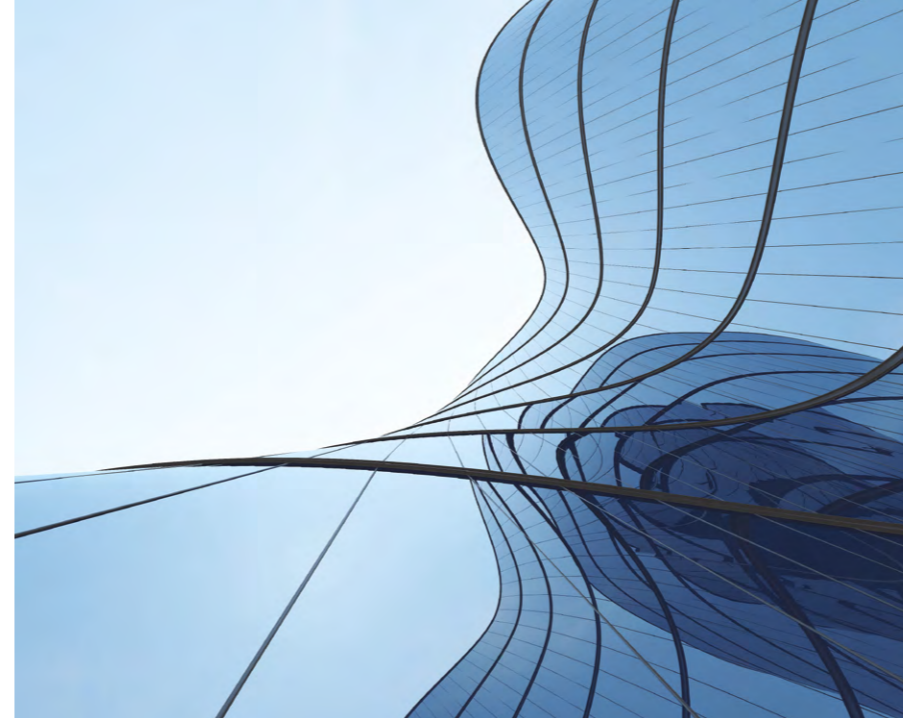
COORDINATE HUES TO COMPLEMENT
BATHROOM DÉCOR, OR LET COLOUR
LEAD THE DESIGN PRINCIPLE



ios – RAL 260 40 10
ios 54 – RAL 000 80 00 / 340 70 05



Amalfi – RAL 095 90 59
Amalfi 55 – RAL 100 90 10



ios – RAL 270 85 10

OUR FINISHES

Select from Victoria + Albert's 30 new colours from the RAL D2 palette to personalise the exterior of our freestanding baths and basins in a rich array of RAL colours, in gloss or matt finishes.

Each finish is multi-layered using a special catalysed paint, and hand-polished between applications for a deep lustre.


VISIT OUR WEBSITE TO VIEW
THE WHOLE RANGE AND
VISUALISE YOUR DESIGN:
WWW.VANDBATHS.COM

victoria ⊕ albert®


In collaboration with

Wallpaper*

www.vandabaths.com

 @victoria_albert_baths

 @Vanda_Baths

 Victoria+Albert Baths

Photography credit: William Bunce



HOUSE OF ROHL